

The background of the slide is a grayscale image. On the right side, there is a bus with the license plate 'CA 49819' and a driver visible through the windshield. On the left side, there is a large, classical-style building with a prominent archway and columns. The text is overlaid on this background.

**Presentation to the Board of  
Directors  
on  
DriveCam Program:  
Summary and Results**

# DriveCam Program Summary

- Cameras installed on all buses October 2009
- Recording is triggered by G-force event (hard braking, swerving, etc.)
- Records eight seconds before and four seconds after G-force event

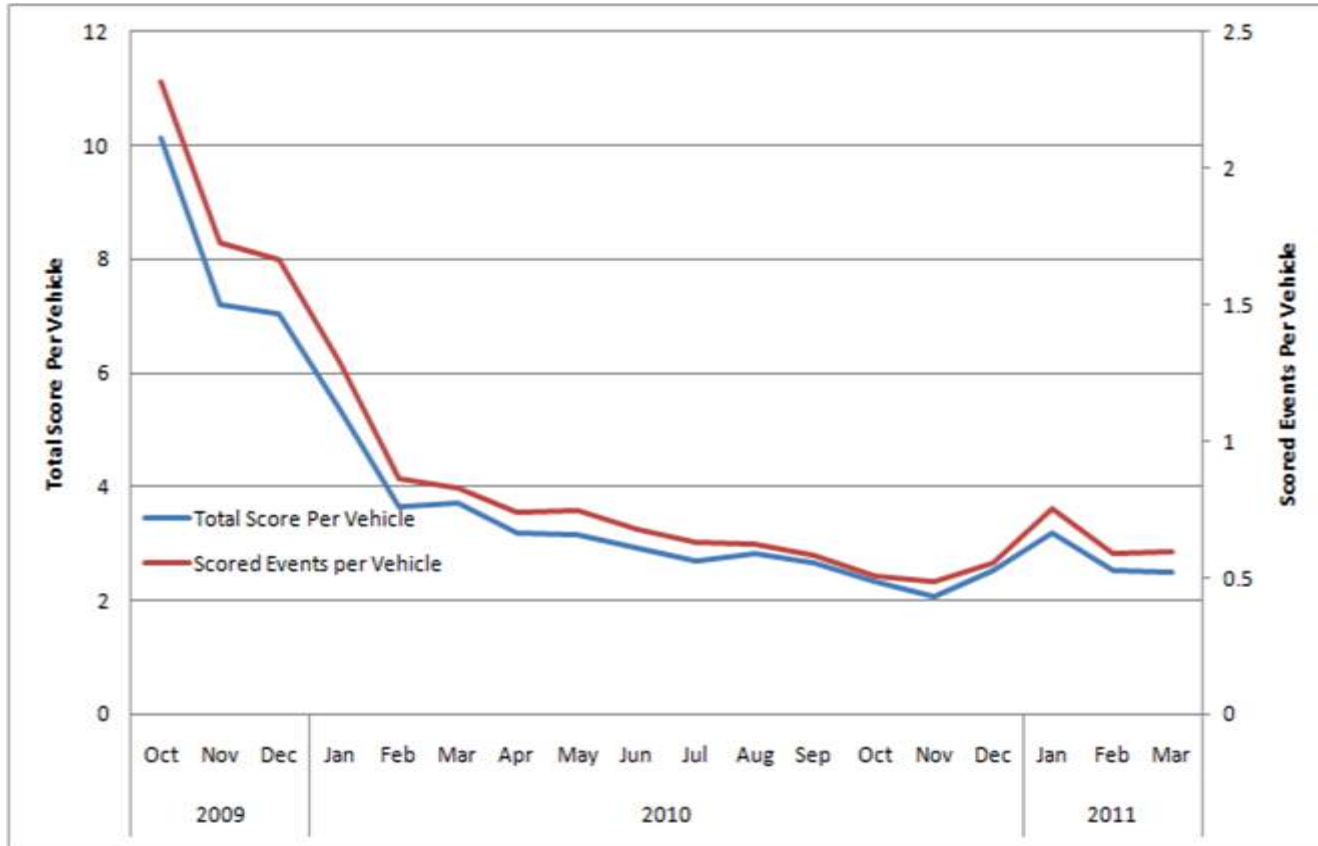


# DriveCam Program Summary (cont'd)

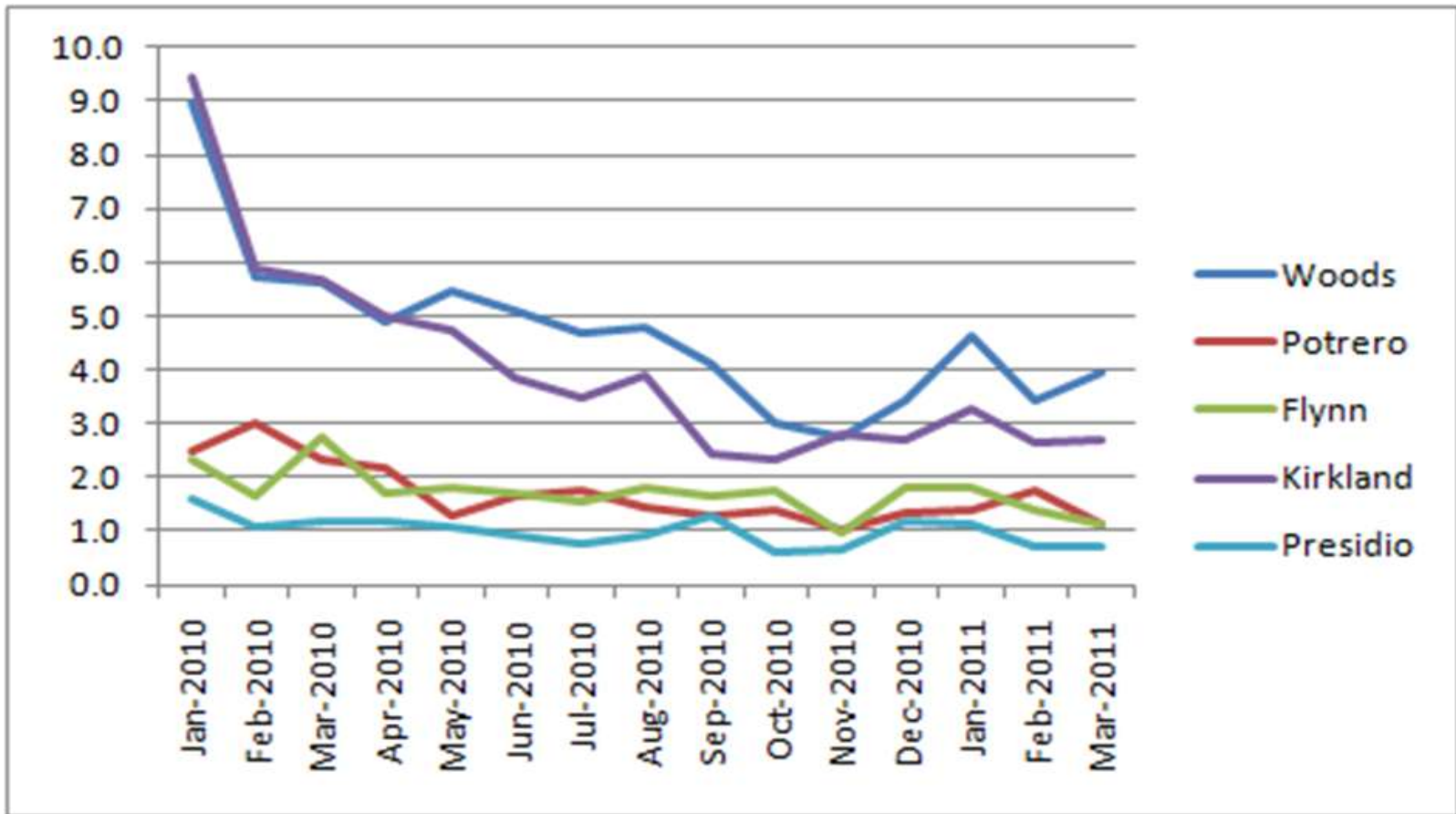
- Events reviewed by SFMTA Safety staff
- High risk events (near collisions, following too closely, etc.) are scored and forwarded to divisions for corrective action and/or operator retraining



# DriveCam Program Results



# DriveCam Program Results (cont'd): Average Score Per Vehicle by Division

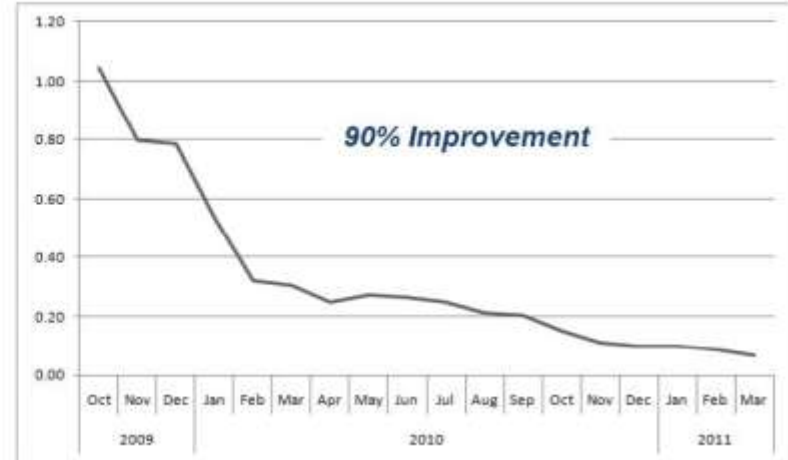


# DriveCam Program Results (cont'd): *Risky Driving Behavior Trends*

Avoidable Near Collisions



Rolling Stops, Stop Signs, Red Lights



Awareness / Late Reaction



Following Too Close



## DriveCam Program Results (cont'd): 2009 vs. 2010 Bus Collision History

Month	2009	2010	% Diff.
July	106	101	-4.7%
August	103	91	-11.7%
September	121	103	-14.9%
October	121	98	-19.0%
November	81	89	+9.9%
December	111	102	-8.1%