



**Muni
Service Delivery
Daily Report**

Sunday, May 23, 2010





Content

• Not outs for the a.m. rush hour	3
• Not outs for the p.m. rush hour	4
• Daily not outs & RDO report	5
• Accidents & line delays > 20 minutes	6
• Vehicles availability and maintenance reports	
Light Rail Vehicles Count (chart)	8
Light Rail Maintenance Hold	9
Light Rail Maintenance Available	10
Light Rail Maintenance Count	11
Motor & Trolley Buses Pull Outs (chart)	12
Motor & Trolley Buses Pull Outs (details)	13
• Operators absenteeism report	14

Not-Outs: No Operators	Not-Outs: No Equipment	Late Pull-outs: No Operators	Late Pull-outs: No Equipment	Lines affected
------------------------------	------------------------------	---------------------------------	---------------------------------	----------------

Runs Not Out and Late Out for Rush Hours

05 24 2010 MONDAY MORNING REPORT

Cable Car	0	0	0	0	
Flynn	0	0	0	0	
Kirkland	0	0	1	0	
Woods	1	0	0	1	31X=1
Potrero	0	0	1	0	
Presidio	0	0	0	0	
Green	0	0	0	1	
F line	0	0	0	0	
TOTAL	1	0	2	2	

Special Events

Emergency Equipment Demand - Reason

Division

Number of coaches

Report data compiled as of - 0740 HOURS (TIME)

<i>Not-Outs: No Operators</i>	<i>Not-Outs: No Equipment</i>	<i>Late Pull-outs: No Operators</i>	<i>Late Pull-outs: No Equipment</i>	<i>Afected lines</i>
-------------------------------	-------------------------------	-------------------------------------	-------------------------------------	----------------------

05 23 10 SUNDAY PM NOLO REPORT

<i>Cable Car</i>	<i>0</i>	<i>0</i>	<i>0</i>	<i>0</i>	
<i>Flynn</i>	<i>0</i>	<i>0</i>	<i>0</i>	<i>0</i>	
<i>Kirkland</i>	<i>0</i>	<i>0</i>	<i>0</i>	<i>0</i>	
<i>Woods</i>	<i>0</i>	<i>0</i>	<i>0</i>	<i>0</i>	
<i>Potrero</i>	<i>0</i>	<i>0</i>	<i>0</i>	<i>0</i>	
<i>Presidio</i>	<i>0</i>	<i>0</i>	<i>0</i>	<i>0</i>	
<i>Metro</i>	<i>0</i>	<i>0</i>	<i>1</i>	<i>0</i>	
<i>F line</i>	<i>0</i>	<i>0</i>	<i>0</i>	<i>0</i>	
<i>TOTAL</i>	<i>0</i>	<i>0</i>	<i>1</i>	<i>0</i>	

Special Events

Emergency Equipment Demand - Reason

Division

Number of coaches

REPORT DATA COMPILED AS OF 1600 HRS

	Runs Missed	RDO	Missed Runs %	Daily Runs Scheduled	Daily Runs Missed	Daily RDO	Daily Pulled Out Runs %
Missed Service By Division Due To No Regular Day Off (RDO)							
SUNDAY MAY 23, 2010 - SIGN UP MAY 2010							
Cable Car one-piece	1	9	4.5%	46	1	9	97.8%
Cable Car multi-piece	0		0.0%				
Flynn one-piece	0	6	0.0%	115	0	6	100.0%
Flynn multi-piece	0		0.0%				
Kirkland one-piece	0	5	0.0%	106	0	5	100.0%
Kirkland multi-piece	0		0.0%				
Woods one-piece	0	4	0.0%	151	0	4	100.0%
Woods multi-piece	0		0.0%				
Potrero one-piece	5	4	7.5%	129	5	4	96.1%
Potrero multi-piece	0		0.0%				
Presidio one-piece	0	3	0.0%	113	0	3	100.0%
Presidio multi-piece	0		0.0%				
Metro one-piece	0	3	0.0%	75	0	3	100.0%
Metro multi-piece	0		0.0%				
F Line one-piece	0	2	0.0%	30	0	2	100.0%
F Line multi-piece	0		0.0%				
System total				765	6	36	99.2%

Accidents

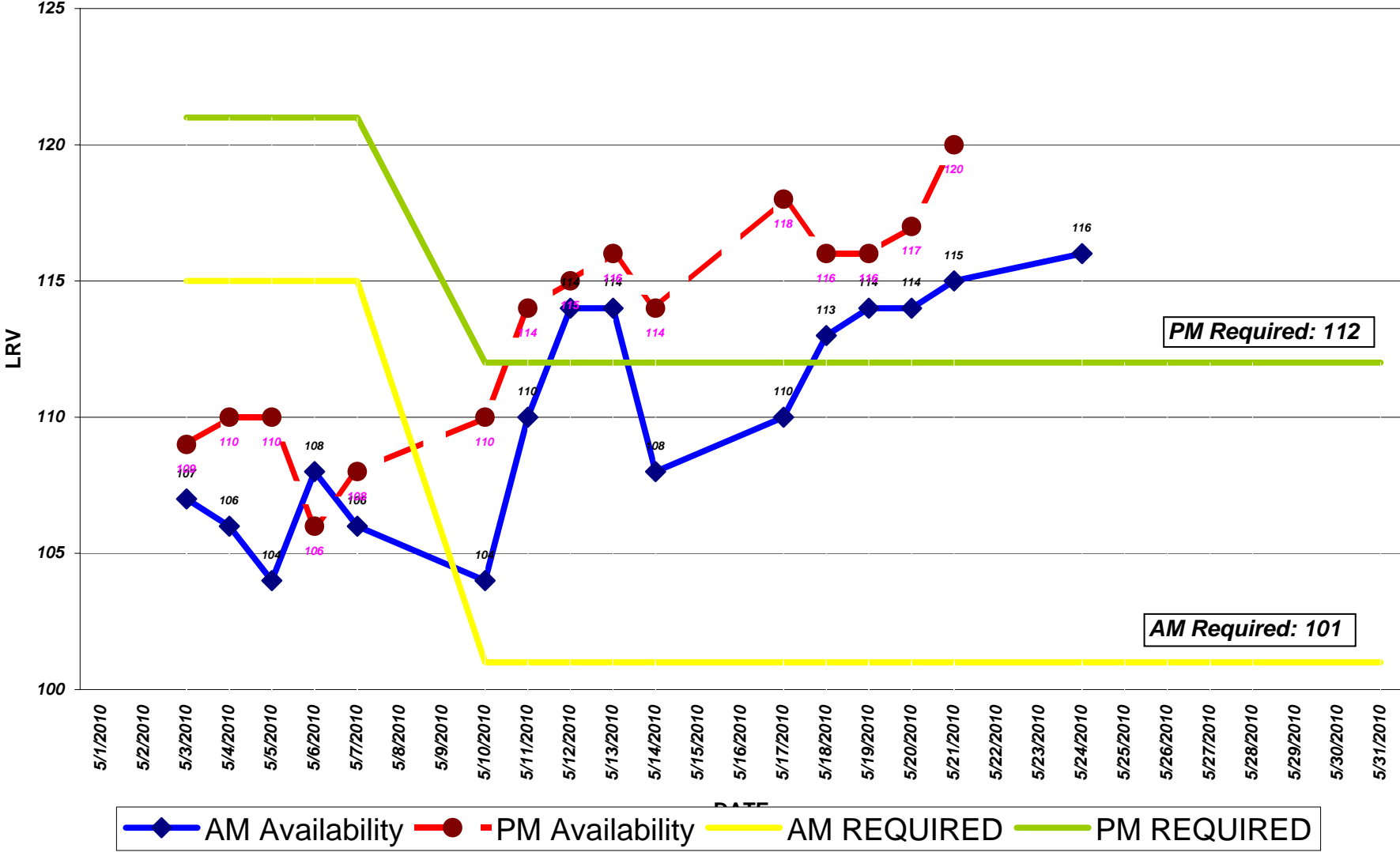
Sun May 23, 2010

TIME DATE	CALL FROM DIVISION	TO CC	OP#	RUN	LINE	VEH	LOCATION	NATURE OF OCCURRENCE ACTION TAKEN	DELAY			
									DI	START	END	CC
15:31 05/23/10	R OPERATOR PR	15	3604	53	21	5542	MC ALISTER & VAN NESS (IB)	OVERHEAD WIRES DOWN	IB	15:31	16:54	38
							1108564	UPPER MANAGEMENT*; 1M1-J. STUART; SFFD; SFPD; OVERHEAD LINE TRUCK 819; INSP. R. JONES; INSP. J. GIANG; PRESIDIO SHOP TRUCK 092; FIRST PAGE: 1545 HRS; FINAL PAGE 1700 HRS. 49, 47 LINES NOT AFFECTED; 5, 21 LINES GIVEN INSTRUCTIONS TO DROP AND RACK POLES; EPU GOING INBOUND ACROSS VAN NESS AVENUE TO REGULAR ROUTE. NO INJURIES OR PROPERTY DAMAGE. VEH DELAY: 01:23				
15:48 05/23/10	R OPERATOR FL	24	26	522	71	6257	HAIGHT & MASONIC (OB)	ACCIDENT-COACH AND AUTOMOBILE-NO INJURIES	OB	16:38	17:33	38
							1108561	SYSTEM SAFETY*; CLAIMS-6A50-S. GRACIA*; VIDEO PULLED*; FIRST PAGE: 1653; LAST PAGE: 1748 HRS.; INSP. L. BROWN REPORTS AUTOMOBILE ATTEMPTING TO BACK INTO A PARKING SPACE MADE CONTACT WITH THE CORNER OF THE L/Front BUMPER SCRAPING THE R/SIDE OF COACH GOING O/B ON HAIGHT STREET. NO DAMAGE TO COACH; MINOR DAMAGE TO AUTOMOBILE; NO POST ACCIDENT TEST REQUIRED. VEH DELAY: 00:55				

Line Delays \geq 20 Minutes

TIME DATE	CALL FROM DIVISION	TO CC	OP#	RUN	LINE	VEH	LOCATION	NATURE OF OCCURRENCE ACTION TAKEN	DELAY			
									DI	START	END	CC
11:48 05/23/10	R OPERATOR GV	75	2647	169	F	1076	MARKET & 4TH STREET (IB)	BLOCKED BY TROLLEY COACH # 5479	IB	11:35	12:00	17
							1108509	INSP L HAYNES* VEH DELAY: 00:25 LINE DELAY: 00:25	LD	11:35	12:00	
12:47 05/23/10	R OPERATOR CA	14	1925	28	61	57	CALIFORNIA & DRUMM (OB)	GRIP CHANGE	OB	12:47		14
							1108517	CABLE CAR TRUCK 665 CLEARED LINE DELAY: 00:22	LD	12:58	13:20	

LIGHT RAIL VEHICLES AM/PM Required & Availability



Date	Day of week	A.M.	P.M.		
		SCHEDULED	ACTUAL	SCHEDULED	ACTUAL
Light Rail Vehicles (LRVs) Availability - Peak					
MAY 2010					
05/03/10	MONDAY	115	107	121	109
05/04/10	TUESDAY	115	106	121	110
05/05/10	WEDNESDAY	115	104	121	110
05/06/10	THURSDAY	115	108	121	106
05/07/10	FRIDAY	115	106	121	108
05/10/10	MONDAY (NEW SCHEDULE)	101	104	112	110
05/11/10	TUESDAY	101	110	112	114
05/12/10	WEDNESDAY	101	114	112	115
05/13/10	THURSDAY	101	114	112	116
05/14/10	FRIDAY	101	108	112	114
05/17/10	MONDAY	101	110	112	118
05/18/10	TUESDAY	101	113	112	116
05/19/10	WEDNESDAY	101	114	112	116
05/20/10	THURSDAY	101	114	112	117
05/21/10	FRIDAY	101	115	112	120
05/24/10	MONDAY	101	116	112	
05/25/10	TUESDAY	101		112	
05/26/10	WEDNESDAY	101		112	
05/27/10	THURSDAY	101		112	
05/28/10	FRIDAY	101		112	
05/31/10	MONDAY	101		112	

	Maintenance Holds
Green Division	
Daily Maintenance Morning Status Report	May
24, 2010	
Light Rail Vehicles (LRVs) on Hold Status @ 7:30 a.m.	

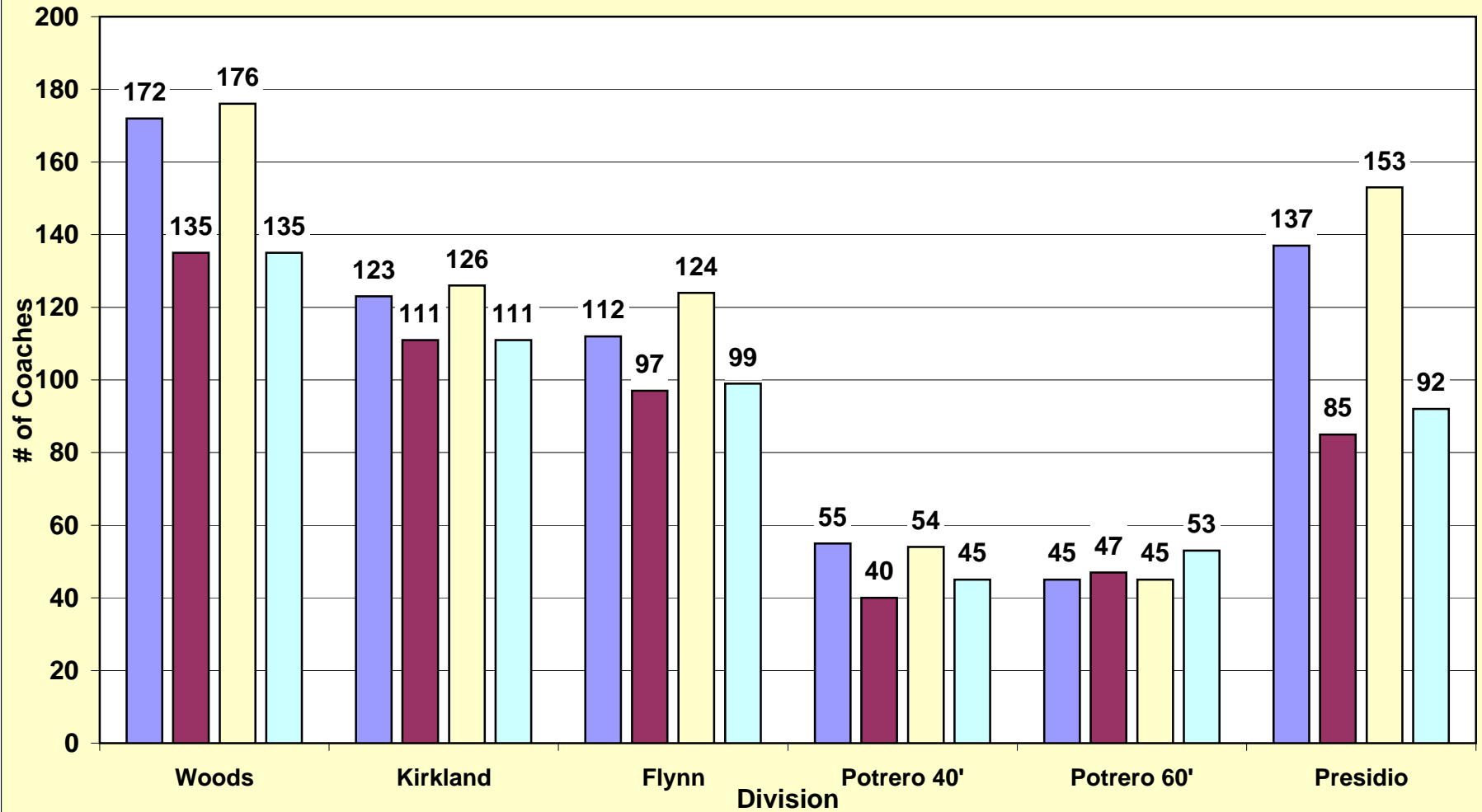
AIR SUPPLY SYSTEM	0
AUTOMATIC TRAIN CONTROL SYSTEM (ATCS)	3
BRAKE SYSTEM	0
COUPLER	0
DOORS / STEPS	0
HEATING/VENTILATION/AIR CONDITIONING (HVAC)	0
LIGHT/MIRROR/WIPER/ARTIC/UNDERCAR	0
DESTSIGN / ELECTRICAL/ELECTRONIC	1
PANTOGRAPHS	0
PROPULSION	1
TRUCK RELATED/ FLAT	0
SUPPORT SHOP	2
PREVENTIVE MAINTENANCE	5
BODY/PAINT/LEAKER	3
FLEET APPEARANCE/CLEANING	1
AWAITING PARTS	0
ACCIDENT/DERAIL/INVESTIGATION	0
BREDA / VENDOR	9
ENGR / PROJECT	0
LONG TERM HOLDS	10
QUALITY ASSURANCE	0

TOTAL **35**

	LRV2/3	PCC	Milan	Historic
Green Division Daily Maintenance				
				May
24, 2010				
Morning Status Report @ 7:30 a.m.				
Fleet size	151	21	10	8
Present demand (AM)	116	13	4	3
Maintenance Holds	35	8	6	4
Equipment available for service @ 7:30 a.m.	116	13	4	4

Motor & Trolley Coaches Availability
A.M. 5/24/10 & 5/21/10 P.M. Peak Time

■ Equipment available for service @ 7:45 a.m.
 ■ Final a.m. pull-out
 ■ Equipment available for service @ 5:30 p.m.
 ■ Final p.m. pull-out



	Schedul ed	Total Unavailable	Sick	Vacation	Unplanned Leave*	Other Reasons+	Total Unavailable	Sick	Vacation	Unplanned Leave*	Other Reasons+
Full-Time Operators Absenteeism											
Day: SUNDAY, MAY 23, 2010											
Green	156	46	8	3	20	15	29.5	5.1	1.9	12.8	9.6
Cable Car	114	20	5	1	6	8	17.5	4.4	0.9	5.3	7.0
Potrero	162	40	13	3	13	11	24.7	8.0	1.9	8.0	6.8
Presidio	136	25	11	2	7	5	18.4	8.1	1.5	5.1	3.7
Kirkland	135	38	8	8	12	10	28.1	5.9	5.9	8.9	7.4
Woods	217	34	6	0	17	11	15.7	2.8	0.0	7.8	5.1
Flynn	145	32	11	3	13	5	22.1	7.6	2.1	9.0	3.4
Total	1,065	235	62	20	88	65	22.1%	5.8%	1.9%	8.3%	6.1%
<i>SUNDAY 05 16 10</i>	1058	276	92	29	81	74	26%	9%	3%	8%	7%
<i>MONDAY 05 17 10</i>	1587	314	99	44	91	80	19%	6%	3%	6%	5%
<i>TUESDAY 05 18 10</i>	1582	298	93	37	99	69	19%	6%	3%	6%	4%
<i>WEDNESDAY 05 19 10</i>	1569	305	81	38	102	84	19%	5%	2%	6%	5%
<i>THURSDAY 05 20 10</i>	1552	288	72	35	110	71	19%	5%	2%	7%	5%
<i>FRIDAY 05 21 10</i>	1580	333	100	40	107	86	21%	6%	2%	7%	5%
<i>SATURDAY 05 22 10</i>	1091	255	69	28	89	69	23%	6%	3%	8%	6%

* **Unplanned leave includes:** absent without leave (AWOL), claimed industrial injury, leaves, suspension, sick on run...

+ **Other reasons includes:** 1 Day vacation, banked holiday, floating holiday, jlmb, birthday, non-driving status, training.