



**Muni
Service Delivery
Daily Report**

Thursday, May 27, 2010





Content

• Not outs for the a.m. rush hour	3
• Not outs for the p.m. rush hour	4
• Daily not outs & RDO report	5
• Accidents & line delays > 20 minutes	6
• Vehicles availability and maintenance reports	
Light Rail Vehicles Count (chart)	7
Light Rail Maintenance Hold	8
Light Rail Maintenance Available	9
Light Rail Maintenance Count	10
Motor & Trolley Buses Pull Outs (chart)	11
Motor & Trolley Buses Pull Outs (details)	12
• Operators absenteeism report	12a

Not-Outs: No Operators	Not-Outs: No Equipment	Late Pull-outs: No Operators	Late Pull-outs: No Equipment	Lines affected
------------------------------	------------------------------	---------------------------------	---------------------------------	----------------

Runs Not Out and Late Out for Rush Hours

05 28 2010 FRIDAY MORNING REPORT

Cable Car	0	0	0	0	
Flynn	0	0	0	0	
Kirkland	2	0	0	0	28=1, 47=1
Woods	0	0	1	1	
Potrero	2	0	1	0	6=1, 30=1
Presidio	0	0	0	0	
Green	0	0	0	0	
F line	0	0	0	0	
TOTAL	4	0	2	1	

Special Events

Emergency Equipment Demand - Reason

Division

Number of coaches

0740 HOURS (TIME)

Not-Outs: No Operators	Not-Outs: No Equipment	Late Pull-outs: No Operators	Late Pull-outs: No Equipment	Afected lines
-------------------------------	-------------------------------	-------------------------------------	-------------------------------------	----------------------

05 27 10 THURSDAY PM NOLO REPORT

Cable Car	0	0	0	0	
Flynn	0	0	0	0	
Kirkland	8	0	0	0	2=1 19=2 28=2 43=1 47=2
Woods	4	0	0	0	9=1 23=1 27=1 108=1
Potrero	3	0	0	0	6=1 14=1 30=1
Presidio	0	0	0	0	
Metro	2	0	0	0	N=1 L=1
F line	2	0	0	0	
TOTAL	19	0	0	0	

Special Events

Emergency Equipment Demand - Reason

Division

Number of coaches

REPORT DATA COMPILED AS OF 1600 HRS

	Runs Missed	RDO	Missed Runs %	Daily Runs Scheduled	Daily Runs Missed	Daily RDO	Daily Pulled Out Runs %
Missed Service By Division Due To No Regular Day Off (RDO)							
THURSDAY, MAY 27, 2010							
SIGN UP MAY 2010							
Cable Car one-piece	2	1	9.1%	49	3	1	94.9%
Cable Car multi-piece	1		16.7%				
Flynn one-piece	2	5	5.3%	154	2	5	98.7%
Flynn multi-piece	0		0.0%				
Kirkland one-piece	5	1	8.8%	189	7	1	96.3%
Kirkland multi-piece	4		4.0%				
Woods one-piece	2	9	2.3%	262	3	9	98.9%
Woods multi-piece	2		2.0%				
Potrero one-piece	2	2	3.0%	181	2	2	98.9%
Potrero multi-piece	0		0.0%				
Presidio one-piece	0	6	0.0%	161	0	6	100.0%
Presidio multi-piece	0		0.0%				
Metro one-piece	3	7	4.5%	151	3	7	98.0%
Metro multi-piece	0		0.0%				
F Line one-piece	2	5	20.0%	32	4	5	87.5%
F Line multi-piece	4		44.4%				
System total				1179	24	36	98.0%

Accidents

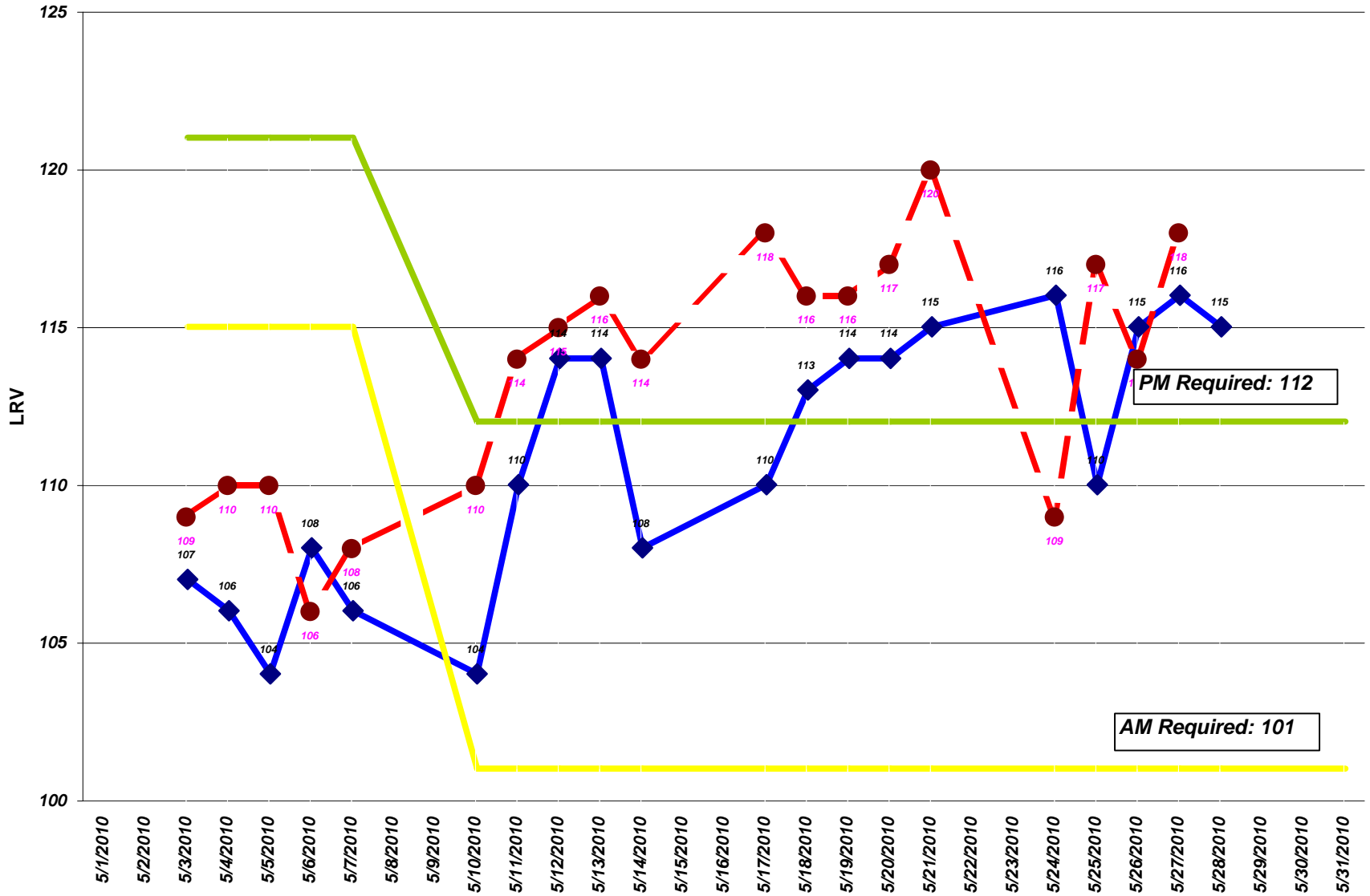
Thu May 27, 2010

TIME DATE	CALL FROM DIVISION	TO CC	OP#	RUN	LINE	VEH	LOCATION	NATURE OF OCCURRENCE ACTION TAKEN	DELAY			
									DI	START	END	CC
08:57 05/27/10	R OPERATOR WO	11	1271	138	54	8136	3RD ST & HUDSON (OB)	ACCIDENT, COACH / TRUCK H&R NO INJURY, MINOR	OB	08:57	09:39	35
							1109132	INSP B.WONG VEH DELAY: 00:42				
12:06 05/27/10	R OPERATOR PO	39	2799	312	22	5462	FILLMORE STREET & EDDY STREET	ACCIDENT, COACH AND TRUCK		12:06	12:45	27
							1109150	MGR. LAVIGNE (1M3)*, INSP. LUM (1T62), SYSTEM SAFETY*, 6A50*, VIDEO*, NO DAMAGE, NO INJURIES, NO 799. J. KELLY*, M. TRAVIS-ALLEN* VEH DELAY: 00:39				
15:41 05/27/10	R OPERATOR FL	07	2035	451	8X	6280	COLUMBUS AVE & STOCKTON STREET (OB)	STINK/SMOKE BOMB LET OFF ON COACH	OB	15:41	15:52	27
							1109161	SFPD UNIT #3A46B CLEARED, NO ARREST. VEH DELAY: 00:11				

Line Delays \geq 20 Minutes

TIME DATE	CALL FROM DIVISION	TO CC	OP#	RUN	LINE	VEH	LOCATION	NATURE OF OCCURRENCE ACTION TAKEN	DELAY			
									DI	START	END	CC
09:33 05/27/10	R OPERATOR PO	39	3316	356	49	7032	VAN NESS & MCALLISTER (OB)	TROLLEY POLE IN OVERHEAD	OB LD	09:33 09:33	09:49 10:13	35
							1109164	INSP S.HOOKS, INSP B.LUM MNGR J.STUART RESPOND. PRESIDIO SHOP 092 LINE TRUCK 820 CLEAR. OB 49 LINE BLOCKED TILL 0949 HRS - IB 5 LINE BLOCKED TO 1054 HRS. SI POTRERO 5474 @10:54 VEH DELAY: 01:21 LINE DELAY: 00:40				
21:06 05/27/10	T SFPD/SFFD WO	88			19		23RD ST & KANSAS (IB,OB)	2 ALARM FIRE BLOCKING	IB LD	21:06 21:06		25 00:12
							1109270	RE-ROUTES FOR 19 LINE I/B & O/B. RE-ROUTES FOR 48 LINE I/B & O/B. INSP.ESPINOZA CLEARED. LINE DELAY: 03:06				

LIGHT RAIL VEHICLES AM/PM Required & Availability



◆ AM Availability
 ● - PM Availability
 — AM REQUIRED
 — PM REQUIRED

PM Required: 112

AM Required: 101

Date	Day of week	A.M.		P.M.	
		SCHEDULED	ACTUAL	SCHEDULED	ACTUAL
Light Rail Vehicles (LRVs) Availability - Peak					
MAY 2010					
05/03/10	MONDAY	115	107	121	109
05/04/10	TUESDAY	115	106	121	110
05/05/10	WEDNESDAY	115	104	121	110
05/06/10	THURSDAY	115	108	121	106
05/07/10	FRIDAY	115	106	121	108
05/10/10	MONDAY (NEW SCHEDULE)	101	104	112	110
05/11/10	TUESDAY	101	110	112	114
05/12/10	WEDNESDAY	101	114	112	115
05/13/10	THURSDAY	101	114	112	116
05/14/10	FRIDAY	101	108	112	114
05/17/10	MONDAY	101	110	112	118
05/18/10	TUESDAY	101	113	112	116
05/19/10	WEDNESDAY	101	114	112	116
05/20/10	THURSDAY	101	114	112	117
05/21/10	FRIDAY	101	115	112	120
05/24/10	MONDAY	101	116	112	109
05/25/10	TUESDAY	101	110	112	117
05/26/10	WEDNESDAY	101	115	112	114
05/27/10	THURSDAY	101	116	112	118
05/28/10	FRIDAY	101	115	112	
05/31/10	MONDAY	101		112	

	Maintenance Holds
Green Division	
Daily Maintenance Morning Status Report	May
28, 2010	
Light Rail Vehicles (LRVs) on Hold Status @ 7:30 a.m.	

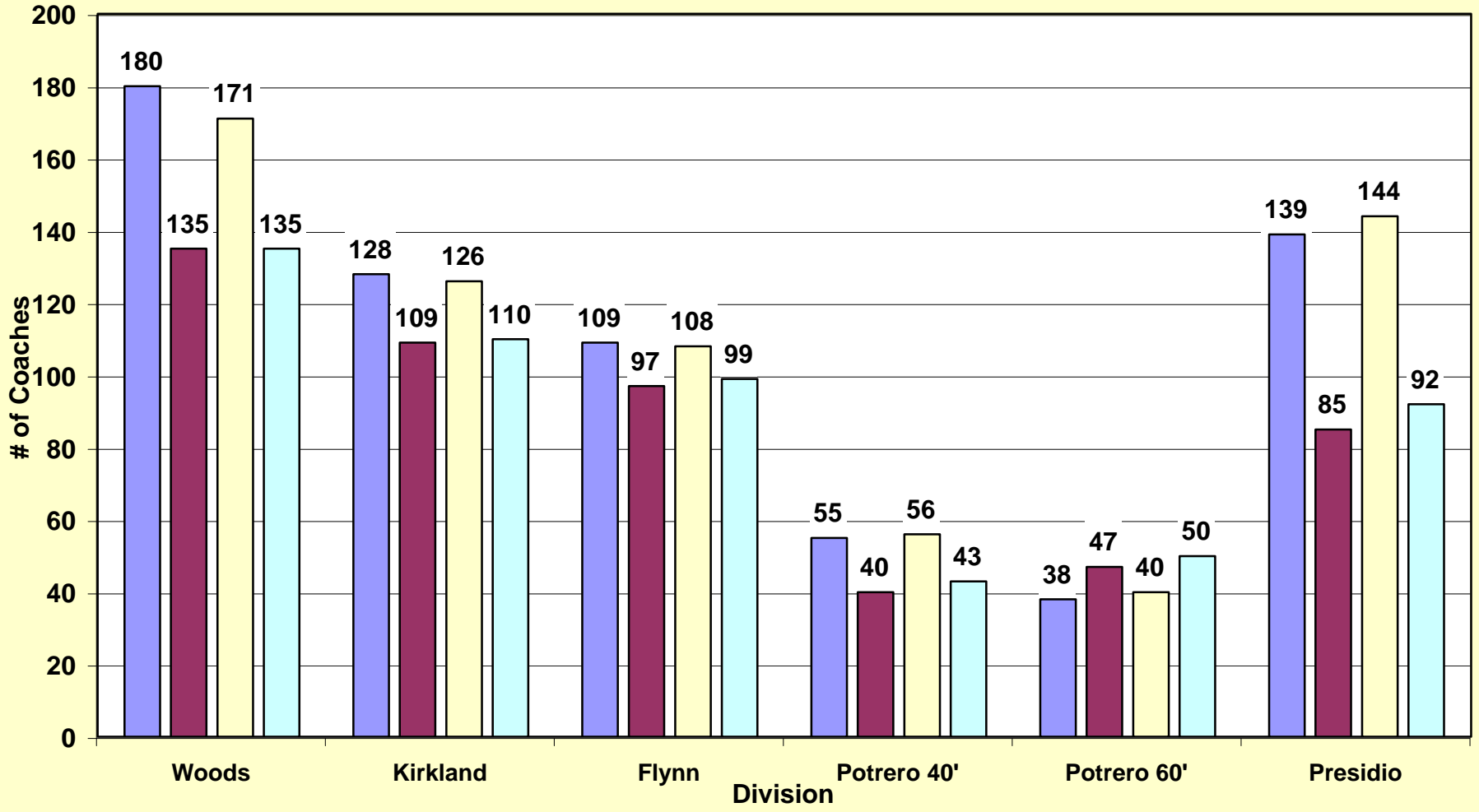
AIR SUPPLY SYSTEM	0
AUTOMATIC TRAIN CONTROL SYSTEM (ATCS)	1
BRAKE SYSTEM	0
COUPLER	0
DOORS / STEPS	1
HEATING/VENTILATION/AIR CONDITIONING (HVAC)	0
LIGHT/MIRROR/WIPER/ARTIC/UNDERCAR	0
DESTSIGN / ELECTRICAL/ELECTRONIC	1
PANTOGRAPHS	0
PROPULSION	0
TRUCK RELATED/ FLAT	2
HEAVY DUTY REPAIR	3
PREVENTIVE MAINTENANCE	4
BODY/PAINT/LEAKER	3
FLEET APPEARANCE/CLEANING	1
AWAITING PARTS	0
ACCIDENT/DERAIL/INVESTIGATION	0
BREDA / VENDOR	9
ENGR / PROJECT	1
LONG TERM HOLDS	10
QUALITY ASSURANCE	0

TOTAL **36**

	LRV2/3	PCC	Milan	Historic
Green Division Daily Maintenance				
28, 2010				May
Morning Status Report @ 7:30 a.m.				
Fleet size	151	21	10	8
Present demand (AM)	101	13	4	3
Maintenance Holds	36	8	6	5
Equipment available for service @ 7:30 a.m.	115	13	4	3

Motor & Trolley Coaches Availability
 A.M. 5/28/10 & 5/27/10 P.M. Peak Time

■ Equipment available for service @ 7:45 a.m.
 ■ Final a.m. pull-out
 ■ Equipment available for service @ 5:30 p.m.
 ■ Final p.m. pull-out



	Woods	Kirkland	Flynn	Subtotal Diesel	Potrero 40'	Potrero 60'	Presidio	Subtotal Trolley	Totals
Bus Maintenance Morning Status Report									
Information Reported by Each Division									
Morning (a.m.) availability									
5/28/10									
Fleet size	205	135	124	464	75	73	165	313	773
Present demand	135	111	97	343	40	47	85	172	515
Extra service	14	0	0	14	N/A	N/A	N/A	N/A	14
Scheduled maintenance	4	1	3	8	0	1	2	3	11
Campaigns / retrofits	2	0	3	5	0	0	0	0	5
Maintenance Holds	25	7	15	47	20	35	26	81	128
Awaiting parts	2	0	0	2	4	11	7	22	24
Radio	0	0	0	0	0	0	0	0	0
Farebox	0	0	0	0	0	0	0	0	0
Equipment available for service @ 7:45 a.m.	180	128	109	417	55	38	139	232	649
Final a.m. pull-out	135	109	97	341	40	47	85	172	513
Reserve fleet usage	20		0	20	0	0	0	0	20
Trolley hot body defects	N/A	N/A	N/A	N/A	0	0	0	0	0
Operator not outs	0	2	0	2	0	0	0	0	2
Afternoon (p.m.) availability									
5/27/10									
Fleet size	201	135	124	460	75	73	165	313	773
Present demand	135	111	99	345	45	53	92	190	535
Extra service	4	0	0	4	N/A	N/A	N/A	N/A	4
Scheduled maintenance	6	1	5	12	0	0	0	0	12
Campaigns / retrofits	2	0	0	2	0	0	0	0	2
Maintenance holds	30	9	16	55	19	33	21	73	128
Awaiting parts	2	0	0	2	4	11	7	22	24
Radio	0	0	0	0	0	0	0	0	0
Farebox	0	0	0	0	0	0	0	0	0
Equipment available for service @ 5:30 p.m.	171	126	108	405	56	40	144	240	645
Final p.m. pull-out	135	110	99	344	43	50	92	185	529
Reserve fleet usage	0	0	0	0	0	0	0	0	0
Trolley hot body defects	N/A	N/A	N/A	N/A	0	0	0	0	0
Operator not outs	0	1	0	1	2	3	0	5	6

	Schedul ed	Total Unavailable	Sick	Vacation	Unplanned Leave*	Other Reasons+	Total Unavailable	Sick	Vacation	Unplanned Leave*	Other Reasons+
Full-Time Operators Absenteeism											
Day: THURSDAY, MAY 27, 2010											
Green	247	62	13	8	25	16	25.1	5.3	3.2	10.1	6.5
Cable Car	133	21	3	1	9	8	15.8	2.3	0.8	6.8	6.0
Potrero	230	56	22	9	14	11	24.3	9.6	3.9	6.1	4.8
Presidio	198	33	9	7	10	7	16.7	4.5	3.5	5.1	3.5
Kirkland	227	45	9	12	12	12	19.8	4.0	5.3	5.3	5.3
Woods	336	48	7	3	23	15	14.3	2.1	0.9	6.8	4.5
Flynn	195	43	14	4	17	8	22.1	7.2	2.1	8.7	4.1
Total	1,566	308	77	44	110	77	19.7%	4.9%	2.8%	7.0%	4.9%
<i>THURSDAY 05 2010</i>	1552	288	72	35	110	71	19%	5%	2%	7%	5%
<i>FRIDAY 05 21 10</i>	1580	333	100	40	107	86	21%	6%	2%	7%	5%
<i>SATURDAY 05 22 10</i>	1091	255	69	28	89	69	23%	6%	3%	8%	6%
<i>SUNDAY 05 23 10</i>	1065	235	62	20	88	65	22%	6%	2%	8%	6%
<i>MONDAY 05 24 10</i>	1599	331	95	46	108	82	21%	6%	3%	7%	5%
<i>TUESDAY 05 25 10</i>	1595	298	83	42	104	69	19%	5%	3%	6%	4%
<i>WEDNESDAY 05 26 10</i>	1594	295	70	42	106	77	18%	4%	3%	7%	5%
<p>* Unplanned leave includes: absent without leave (AWOL), claimed industrial injury, leaves, suspension, sick on run...</p> <p>+ Other reasons includes: 1 Day vacation, banked holiday, floating holiday, jlmb, birthday, non-driving status, training.</p>											