



**Muni  
Service Delivery  
Daily Report**

Wednesday, May 26, 2010





## Content

• Not outs for the a.m. rush hour	3
• Not outs for the p.m. rush hour	4
• Daily not outs & RDO report	5
• Accidents & line delays > 20 minutes	6
• Vehicles availability and maintenance reports	
Light Rail Vehicles Count (chart)	8
Light Rail Maintenance Hold	9
Light Rail Maintenance Available	10
Light Rail Maintenance Count	11
Motor & Trolley Buses Pull Outs (chart)	12
Motor & Trolley Buses Pull Outs (details)	13
• Operators absenteeism report	14

<b>Not-Outs: No Operators</b>	<b>Not-Outs: No Equipment</b>	<b>Late Pull-outs: No Operators</b>	<b>Late Pull-outs: No Equipment</b>	<b>Lines affected</b>
---------------------------------------	---------------------------------------	---	---	-----------------------

**Runs Not Out and Late Out for Rush Hours**

**05 27 10 AM NOLO MORNING REPORT**

<b>Cable Car</b>	0	0	0	0	
<b>Flynn</b>	1	0	1	0	38=1
<b>Kirkland</b>	0	0	0	0	
<b>Woods</b>	2	0	4	0	29=2
<b>Potrero</b>	0	0	0	1	
<b>Presidio</b>	0	0	0	0	
<b>Green</b>	0	0	0	0	
<b>F line</b>	0	0	0	0	
<b>TOTAL</b>	3	0	5	1	

**Special Events**

**Emergency Equipment Demand - Reason**

Division

Number of coaches

Report data compiled as of - (TIME)

<b>Not-Outs: No Operators</b>	<b>Not-Outs: No Equipment</b>	<b>Late Pull-outs: No Operators</b>	<b>Late Pull-outs: No Equipment</b>	<b>Afected lines</b>
-------------------------------	-------------------------------	-------------------------------------	-------------------------------------	----------------------

**05 26 10 WEDNESDAY PM NOLO REPORT**

<b>Cable Car</b>	0	0	0	0	
<b>Flynn</b>	3	0	0	0	8X=1 14L=1 38=1
<b>Kirkland</b>	3	0	0	0	10=1 28=1 47=1
<b>Woods</b>	7	0	0	0	9=2 29=2 44=1 48=1 90=1
<b>Potrero</b>	1	0	0	0	14=1
<b>Presidio</b>	0	0	0	0	
<b>Metro</b>	3	0	1	0	S=3
<b>F line</b>	0	0	0	0	
<b>TOTAL</b>	<b>17</b>	<b>0</b>	<b>1</b>	<b>0</b>	

**Special Events**

Emergency Equipment Demand - Reason

Division

Number of coaches

**REPORT DATA COMPILED AS OF 1600 HRS**

	Runs Missed	RDO	Missed Runs %	Daily Runs Scheduled	Daily Runs Missed	Daily RDO	Daily Pulled Out Runs %
<b>Missed Service By Division Due To No Regular Day Off (RDO)</b>							
WEDNESDAY, MAY 26, 2010							
SIGN UP MAY 2010							
<b>Cable Car one-piece</b>	0	0	0.0%	49	0	0	100.0%
<b>Cable Car multi-piece</b>	0		0.0%				
<b>Flynn one-piece</b>	2	7	5.3%	154	2	7	98.7%
<b>Flynn multi-piece</b>	0		0.0%				
<b>Kirkland one-piece</b>	2	4	3.5%	189	2	4	98.9%
<b>Kirkland multi-piece</b>	0		0.0%				
<b>Woods one-piece</b>	4	3	4.6%	262	7	3	97.3%
<b>Woods multi-piece</b>	6		6.0%				
<b>Potrero one-piece</b>	0	0	0.0%	181	0	0	100.0%
<b>Potrero multi-piece</b>	0		0.0%				
<b>Presidio one-piece</b>	3	0	5.8%	161	0	0	100.0%
<b>Presidio multi-piece</b>	2		2.4%				
<b>Metro one-piece</b>	3	3	4.5%	151	3	3	98.0%
<b>Metro multi-piece</b>	0		0.0%				
<b>F Line one-piece</b>	2	5	20.0%	32	2	5	93.8%
<b>F Line multi-piece</b>	0		0.0%				
<b>System total</b>				<b>1179</b>	<b>16</b>	<b>22</b>	<b>98.6%</b>

# Accidents

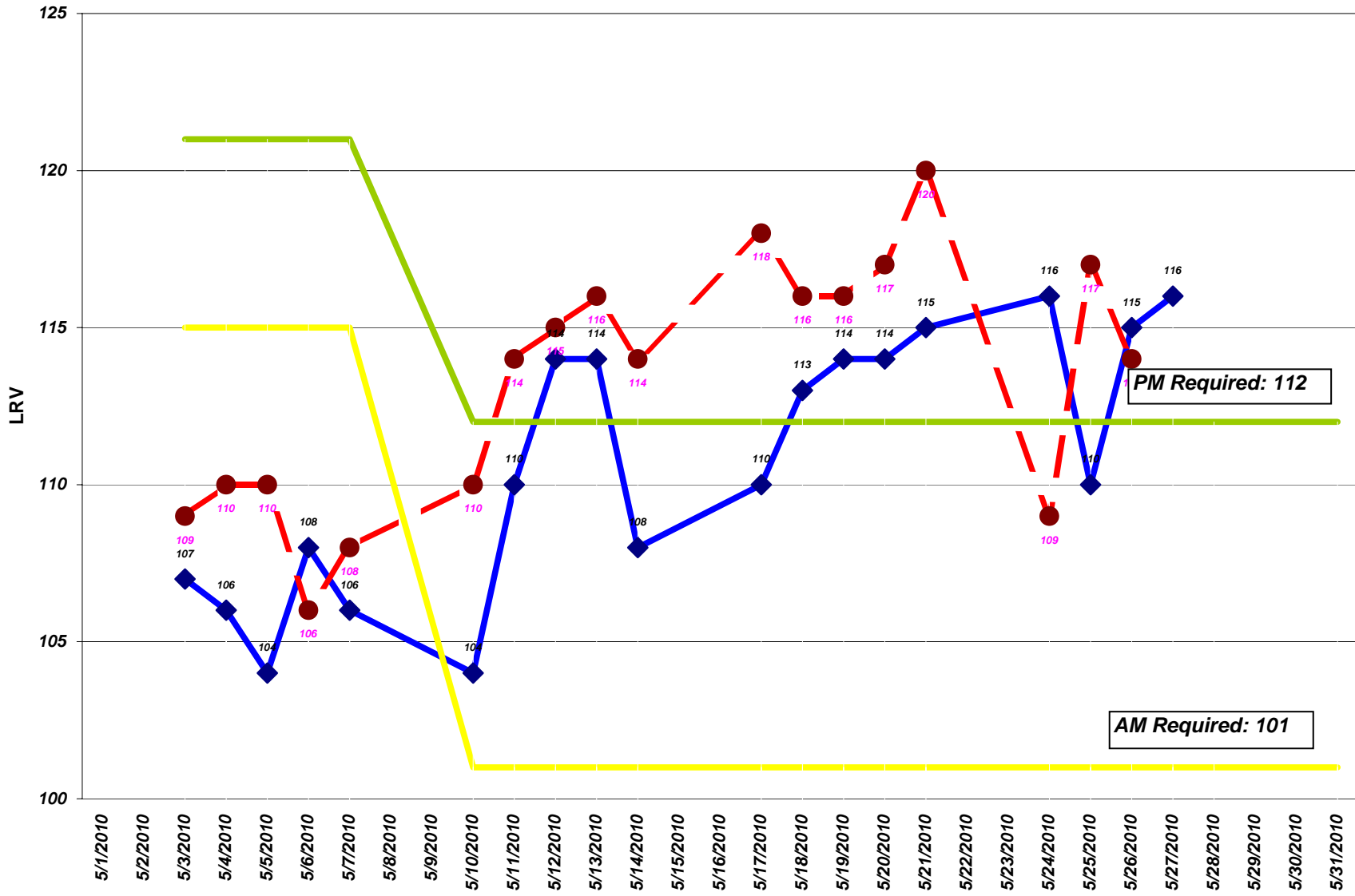
Wed May 26, 2010

TIME DATE	CALL FROM DIVISION	TO CC	OP#	RUN	LINE	VEH	LOCATION	NATURE OF OCCURRENCE ACTION TAKEN	DELAY			
									DI	START	END	CC
19:36 05/26/10	R INSP. HENDERS WO	27	1314	273	K/M	2838	GENEVA AVE & SAN JOSE AVE (IB)	ACCIDENT, COACH AND AUTO	IB	19:35	20:03	27
							1109081	INSP. HENDERSON (1T79B), 6A45*, VIDEO*, SYSTEM SAFETY MINOR DAMAGE TO COACH, MODERATE DAMAGE TO AUTO, AUTO OPENED DOOR INTO LEFT REAR OF COACH. J. KELLY*, M. TRAVIS-ALLEN*, NO 799, NO INJURIES. VEH DELAY: 00:28				

## Line Delays $\geq$ 20 Minutes

TIME DATE	CALL FROM DIVISION	TO CC	OP#	RUN	LINE	VEH	LOCATION	NATURE OF OCCURRENCE ACTION TAKEN	DELAY			
									DI	START	END	CC
07:59 05/26/10	R SFPD PO	39				33	18TH ST & ORD (IB,OB)	SUSPICIOUS PACKAGE	IB	07:59	09:08	35
							1108972	INSP K.JOMOC. MNGR J.STUART* 33 LINE REROUTED: IB: 18TH ST TO CASTRO, R-CASTRO, L- HAIGHT, R STANYAN TO REGULAR ROUTE. OB: MARKET / 18TH ST, EPU ON MARKET TO CASTRO, R-CASTRO, L 18TH ST TO REGULAR ROUTE. 2 SHUTTLES USED TO BRIDGE SERVICE VEH DELAY: 01:09 LINE DELAY: 01:26	LD	07:59	09:25	
16:50 05/26/10	R OPERATOR ME	29	1981	084	J	1535	DUBOCE PORTAL (D-4) (IB)	OVEHEAD (SUPPORT WIRE BROKEN)	IB	16:50	16:54	74
							1109035	SENIOR STAFF/SYSTEM SAFETY; LSGP; SUBWAY P/A; STATION HOLDS; PORTAL HOLDS; 311 CENTER* INSP F CADELINA, E WELLS & J CASTILLO* OVERHEAD LINE TRUCK 819 REPAIRED; INSP J CHAVEZ ASSISTED; ^N^ & ^J^ LINE WAS SWITCHED BACK IB TO OB @ CHURCH & DUBOCE. ^J^ & ^N^ LINE SUBWAY SERVICE SWITCHED BACK OB TO IB @ CASTRO. VEH DELAY: 00:04 LINE DELAY: 00:47	LD	16:50	17:37	

## LIGHT RAIL VEHICLES AM/PM Required & Availability



◆ AM Availability   
 ● PM Availability   
 — AM REQUIRED   
 — PM REQUIRED

PM Required: 112

AM Required: 101

Date	Day of week	A.M.		P.M.	
		SCHEDULED	ACTUAL	SCHEDULED	ACTUAL
<b>Light Rail Vehicles (LRVs) Availability - Peak</b>					
MAY 2010					
05/03/10	MONDAY	115	<b>107</b>	121	<b>109</b>
05/04/10	TUESDAY	115	<b>106</b>	121	<b>110</b>
05/05/10	WEDNESDAY	115	<b>104</b>	121	<b>110</b>
05/06/10	THURSDAY	115	<b>108</b>	121	<b>106</b>
05/07/10	FRIDAY	115	<b>106</b>	121	<b>108</b>
05/10/10	MONDAY (NEW SCHEDULE)	101	<b>104</b>	112	<b>110</b>
05/11/10	TUESDAY	101	<b>110</b>	112	<b>114</b>
05/12/10	WEDNESDAY	101	<b>114</b>	112	<b>115</b>
05/13/10	THURSDAY	101	<b>114</b>	112	<b>116</b>
05/14/10	FRIDAY	101	<b>108</b>	112	<b>114</b>
05/17/10	MONDAY	101	<b>110</b>	112	<b>118</b>
05/18/10	TUESDAY	101	<b>113</b>	112	<b>116</b>
05/19/10	WEDNESDAY	101	<b>114</b>	112	<b>116</b>
05/20/10	THURSDAY	101	<b>114</b>	112	<b>117</b>
05/21/10	FRIDAY	101	<b>115</b>	112	<b>120</b>
05/24/10	MONDAY	101	<b>116</b>	112	<b>109</b>
05/25/10	TUESDAY	101	<b>110</b>	112	<b>117</b>
05/26/10	WEDNESDAY	101	<b>115</b>	112	<b>114</b>
05/27/10	THURSDAY	101	<b>116</b>	112	
05/28/10	FRIDAY	101		112	
05/31/10	MONDAY	101		112	



	<b>Maintenance Holds</b>
<b>Green Division</b>	
<b>Daily Maintenance Morning Status Report</b>	<b>May</b>
<b>27, 2010</b>	
Light Rail Vehicles (LRVs) on Hold Status @ 7:30 a.m.	

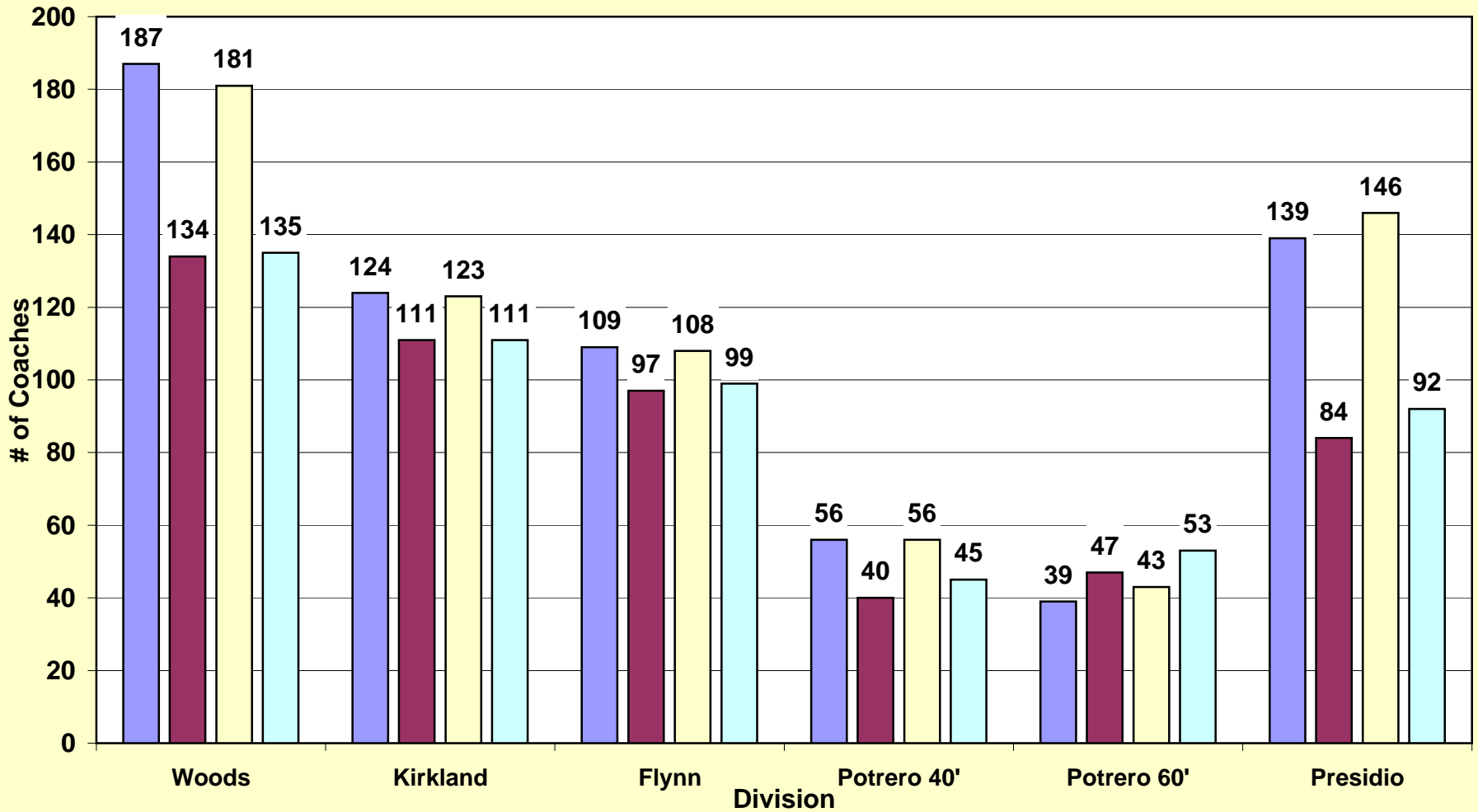
AIR SUPPLY SYSTEM	0
AUTOMATIC TRAIN CONTROL SYSTEM (ATCS)	1
BRAKE SYSTEM	0
COUPLER	1
DOORS / STEPS	0
HEATING/VENTILATION/AIR CONDITIONING (HVAC)	0
LIGHT/MIRROR/WIPER/ARTIC/UNDERCAR	0
DESTSIGN / ELECTRICAL/ELECTRONIC	0
PANTOGRAPHS	0
PROPULSION	0
TRUCK RELATED/ FLAT	3
HEAVY DUTY REPAIR	4
PREVENTIVE MAINTENANCE	4
BODY/PAINT/LEAKER	2
FLEET APPEARANCE/CLEANING	0
AWAITING PARTS	0
ACCIDENT/DERAIL/INVESTIGATION	0
BREDA / VENDOR	9
ENGR / PROJECT	1
LONG TERM HOLDS	10
QUALITY ASSURANCE	0

**TOTAL** **35**

	LRV2/3	PCC	Milan	Historic
<b>Green Division Daily Maintenance</b>				
				<b>May</b>
<b>27, 2010</b>				
Morning Status Report @ 7:30 a.m.				
<b>Fleet size</b>	151	21	10	8
<b>Present demand (AM)</b>	101	13	4	3
<b>Maintenance Holds</b>	<b>35</b>	<b>8</b>	<b>6</b>	<b>4</b>
<b>Equipment available for service @ 7:30 a.m.</b>	<b>116</b>	<b>13</b>	<b>4</b>	<b>4</b>

**Motor & Trolley Coaches Availability**  
**A.M. 5/27/10 & 5/26/10 P.M. Peak Time**

■ Equipment available for service @ 7:45 a.m.  
 ■ Final a.m. pull-out  
 ■ Equipment available for service @ 5:30 p.m.  
 ■ Final p.m. pull-out





	Schedul ed	Total Unavailable	Sick	Vacation	Unplanned Leave*	Other Reasons+	Total Unavailable	Sick	Vacation	Unplanned Leave*	Other Reasons+
<b>Full-Time Operators Absenteeism</b>											
<b>Day: WEDNESDAY, MAY 26, 2010</b>											
Green	251	60	11	8	23	18	23.9	4.4	3.2	9.2	7.2
Cable Car	134	16	3	1	7	5	11.9	2.2	0.7	5.2	3.7
Potrero	231	52	18	9	13	12	22.5	7.8	3.9	5.6	5.2
Presidio	205	31	8	7	8	8	15.1	3.9	3.4	3.9	3.9
Kirkland	233	47	7	10	13	17	20.2	3.0	4.3	5.6	7.3
Woods	343	47	8	3	24	12	13.7	2.3	0.9	7.0	3.5
Flynn	197	42	15	4	18	5	21.3	7.6	2.0	9.1	2.5
<b>Total</b>	<b>1,594</b>	<b>295</b>	<b>70</b>	<b>42</b>	<b>106</b>	<b>77</b>	<b>18.5%</b>	<b>4.4%</b>	<b>2.6%</b>	<b>6.6%</b>	<b>4.8%</b>
<i>WEDNESDAY 05 19 10</i>	1569	305	81	38	102	84	19%	5%	2%	6%	5%
<i>THURSDAY 05 20 10</i>	1552	288	72	35	110	71	19%	5%	2%	7%	5%
<i>FRIDAY 05 21 10</i>	1580	333	100	40	107	86	21%	6%	2%	7%	5%
<i>SATURDAY 05 22 10</i>	1091	255	69	28	89	69	23%	6%	3%	8%	6%
<i>SUNDAY 05 23 10</i>	1065	235	62	20	88	65	22%	6%	2%	8%	6%
<i>MONDAY 05 24 10</i>	1599	331	95	46	108	82	21%	6%	3%	7%	5%
<i>TUESDAY 05 25 10</i>	1595	298	83	42	104	69	19%	5%	3%	6%	4%

\* **Unplanned leave includes:** absent without leave (AWOL), claimed industrial injury, leaves, suspension, sick on run...

+ **Other reasons includes:** 1 Day vacation, banked holiday, floating holiday, jlmb, birthday, non-driving status, training.

